

Change of Habits

Public - more environmentally conscious

a) Less Wastages

- i) Use less paper, re-use paper**
- ii) Use less packages, demand no excessive packagings**
- iii) Use less plastic bags**

b) Ready to separate and recycle wastes

- i) 3 coloured bins**
- ii) Separation from source**
- iii) Wet-dry waste separation**

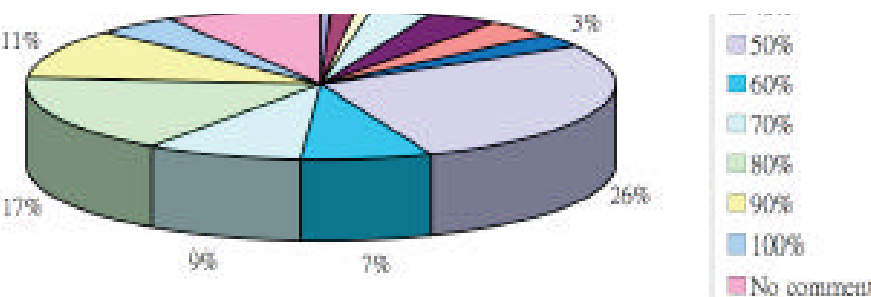
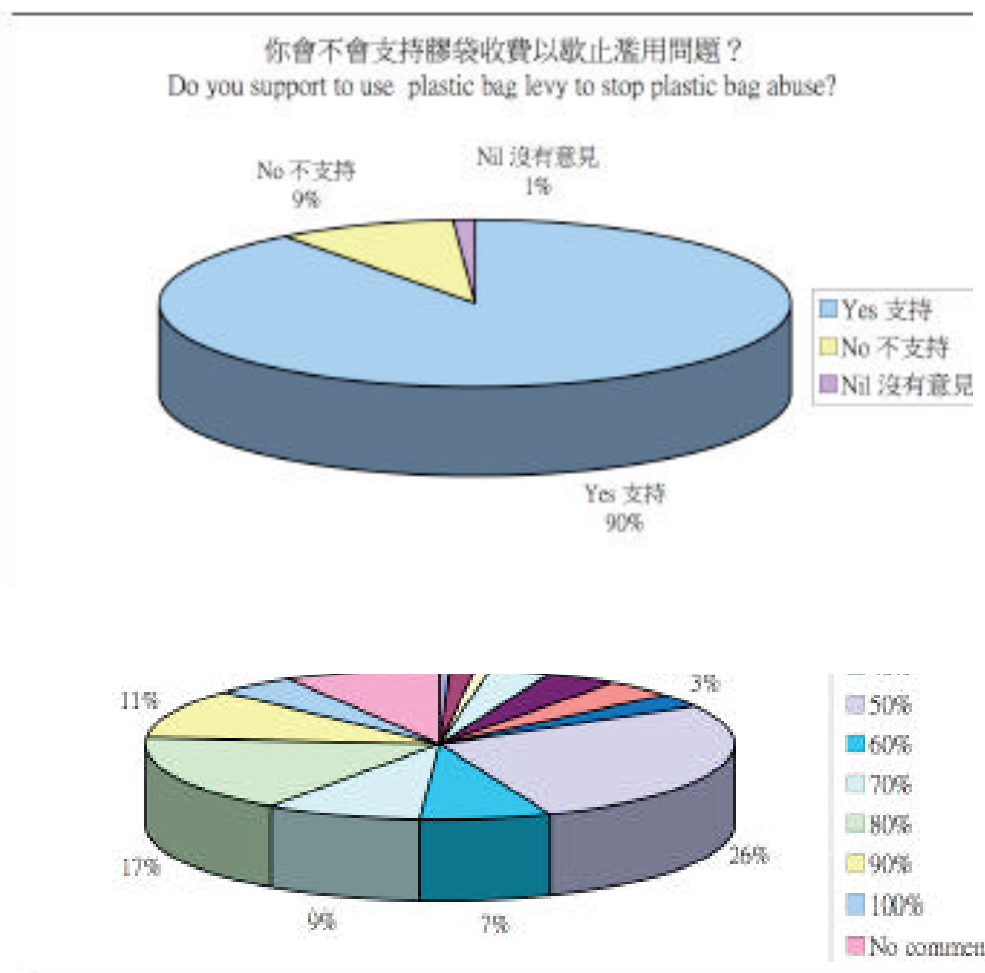
c) Ready to pay a charge

- i) Pollings**

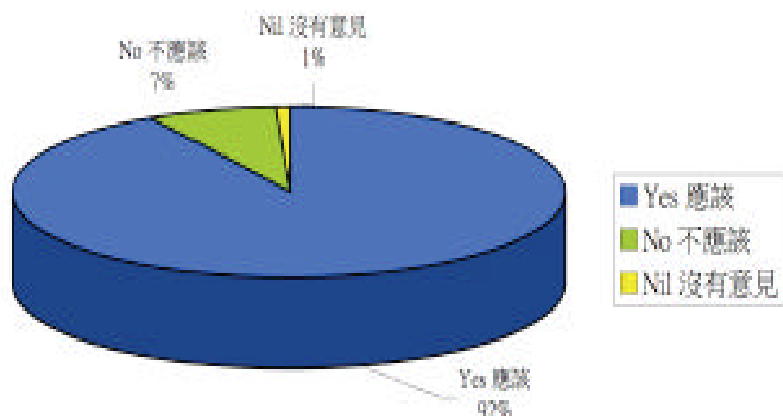
膠袋收費計劃調查 – 綠色學生聯會

有**90%**的受訪市民表示支持膠袋收費以歇止濫用膠袋問題，而**9%**的受訪者表示反對，另有**1%**的受訪者表示沒有意見。

90% of the interviewee said they support to use levy to reduce the abuse plastic bags, 9% of interviewee said they don't agree, and 1 % said no comment.



政府應否盡快落實膠袋收費計劃？
Do you think the government have to enforce the plastic bag levy as soon as possible?



- ii) **PRS - plastic bags, tyres, electronic products**

Businesses

d) Waste reduction, separation and recycling initiatives

- i) **Food waste composting in some big shopping malls**
- ii) **Wastewise Scheme**
- iii) **Rechargeable Battery Recycling Programme**
- iv) **Hong Kong Eco-Products Awards**
- v) **One Factory-One Year-One Environmental Project**

e) Development in waste management and technologies

f) Use of environmentally friendly materials - recycled materials, biodegradables

g) Voluntarily reduce use of excessive packages - moon cakes

Change of Mind Sets

Businesses - changed positively in these recent years

- a) Accept PRS, green tax, levies - motion debates at Legco, forums, seminars**
- b) Take an active role in promoting PRS, sorting and recycling**
- c) Respond positively to criticism – cigarette packaging**
- d) All sorts of initiatives to reduce and reuse wastes**

Legislative Council – unanimous

- a) A central waste management authority should be considered**
- b) Waste reduction, separation and sorting and final treatment must be done
SIMULTANEOUSLY**
- c) Levies, green taxes, charges, etc. are effective means of waste reduction, should be implemented a.s.a.p.**
- d) All kinds of separations and sortings must be encouraged**
- e) Must minimize the use of landfills or incinerators**

Government – most vital

a) Waste treatment means waste management

b) Public will not pay

c) Businesses do not accept PRS

Policy on the recycling industry

(23 February 2005)

Hon Andrew LEUNG Kwan-yuen:

That this Council urges the Government to implement as early as possible a sustainable development plan, which includes formulating a long-term policy on the recycling industry, implementing the development plan of the "Recovery Park", considering **the imposition of a reasonable green tax**, and establishing a high-level inter-departmental industries facilitation council to co-ordinate the communication and co-operation among various departments in a highly efficient manner so as to enhance public awareness of environmental protection and instill in them the correct attitude to handling wastes, with a view to solving the aggravating environmental pollution problem in Hong Kong as early as possible, as well as creating business opportunities and increasing job opportunities.

Regulating the handling of electronic wastes and promoting the electronic waste recycling industry

(25 May 2005)

Hon Tommy CHEUNG :

That this Council urges the Government to amend the legislation relating to the regulation of the disposal as well as the import and export of electronic wastes, and to step up law enforcement in order to eliminate the environmental hazards posed by electronic wastes to Hong Kong and other places; at the same time, the Government should implement a **comprehensive** responsibility scheme **encompassing the producers, importers and users**, and establish a comprehensive **and effective** recycling system to promote the recycling of electronic wastes, with a view to creating employment opportunities.

d) Legco will not agree to any charges or legislations

e) Technologies are not mature

f) Incineration was and is still today the best and most widely used technology

g) Land is always a problem for any means of waste management, but is never a problem for incinerators